

# Mobile Power System

*The **MOBILE POWER SYSTEM** is a fully customized and furnished portable backup power unit.*



**Designed, engineered and built by HM Cragg, the MOBILE POWER SYSTEM caters to electric utility, outdoor event and telecommunications applications. Each unit is customized to meet the specifications and system requirements of the customer.**

- Accessible and portable emergency/temporary AC or DC power for critical facilities
- Reliable temporary DC power when a critical stationary battery or DC power system is required to be taken out of service for emergency/planned maintenance, or for testing including NERC Standard PRC-005-02 compliance testing and replacement
- Reliable temporary AC power for off-grid events or uninterruptible AC power for temporary events
- Black start capability and power restoration
- All units are DOT compliant
- Customer arrangement and electrical drawings available



**HM CRAGG**  
*critical power +*

# Mobile Power System

## *Applications:*

### **ELECTRIC UTILITY**

- 250V, 125V & 48V DC for switchgear and control
- 48V & 24V DC for substation and microwave site communication

### **TELECOMMUNICATIONS**

- 48V & 24V DC for central & remote switching office communication

### **TEMPORARY EVENTS**

- 120V, 208V, 480V AC

## *Trailer Features:*

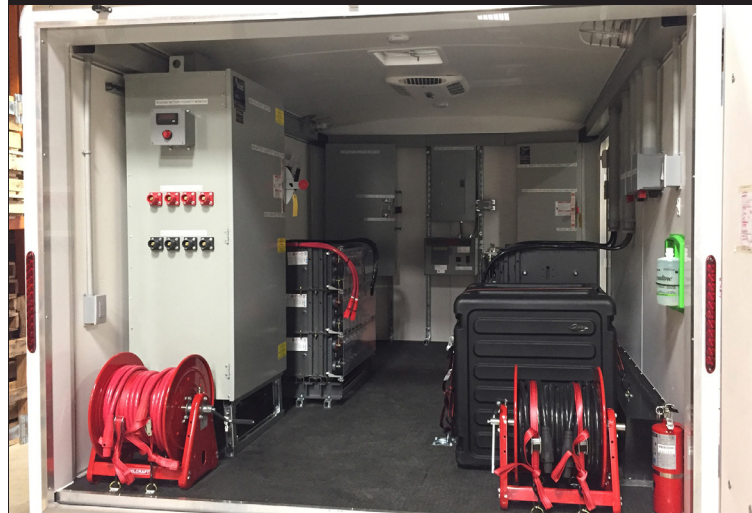
- Steel frame with aluminum exterior cladding
- Insulated interior sidewalls & ceiling w/ vinyl liner
- High performance decking with choice of floor covering
- Interior LED lighting & 120 VAC receptacles
- Side or roof air vents with ventilation fan
- Roof-mount A/C, baseboard convection heat or forced air
- Dual-axle with Torflex suspension
- Single or double rear doors & curb side door
- DOT compliant exterior LED lighting, signaling & reflective tape
- Customer specific trailer end connector and cable
- Adjustable height pintle eye coupler
- Drop-down rear stabilizer jacks
- Electric drum brakes with battery + solar charger break-away kit

## *System Features & Options:*

- Choice of battery technologies
- Seismic rated battery racks for repeatable over the road transport
- Choice of charger technologies
- 120/208/240 VAC distribution system with external cable port & cable
- DC output disconnect switch with over-current protection
- External DC cam-lock connection points
- External ground termination plate(s) with cable & clamps
- Custom length DC output cables on reels with cam-lock connectors
- Eye wash station, fire extinguishers
- Metering options: AC input voltage/current, DC output voltage/current
- Options: hydrogen detection system, reverse battery & output cable short circuit alarm, spill containment system, dual DC system voltages, AC generator, DC load banks, inverter system



*Available in sizes 6'- 8.5' wide by 8'- 16' long*



*Customize interior to meet your backup power specifications*



**info@hmcragg.com • 800-672-7244 • www.hmcragg.com**

**7490 Bush Lake Road, Edina, MN 55439**